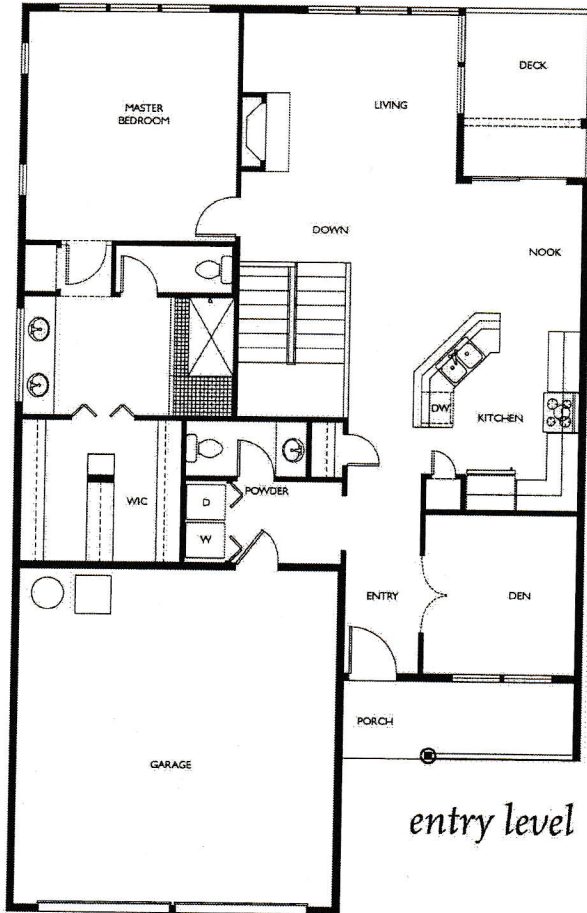




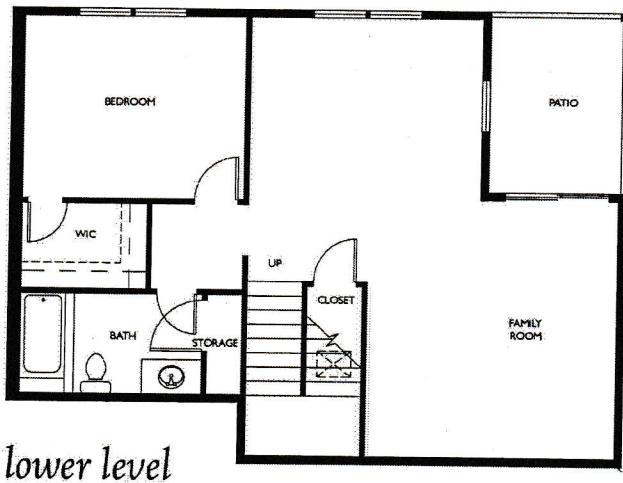
**POULSBO PLACE**  
IN THE HEART OF HISTORIC POULSBO

# Larkspur 2

Plan M • 2,121 sq. ft



- Two bedrooms
- Two and a half baths
- Den and family activity room
- Double car garage
- Master on main floor and lower level guest suite
- View oriented
- Great room living
- Front porch friendly
- Private patio or deck
- Low maintenance lifestyle



Gross square footages are derived from architectural estimates. Actual square footages are based on interior surface dimensions (excluding perimeter wall thickness) and may be less.

The builder reserve the right to make modifications to building design, specifications, materials and floor plans. Sizes are approximate: actual floor plans and square footages may vary.

The builder of Poulsbo Place is SP Poulsbo GPI I, Inc. A Dwelling Company, Member: Each Dwelling Company Member is an independent corporation.

Phone: 360-697-0060 Toll-Free: 1-877-882-0060 Fax: 360-697-1971

In our continuing effort to improve the design and function of our homes, we reserve the right to modify or change plans, specifications, features and prices without notice. Renderings are artist's conception only. All dimensions and sizes are approximate. Interior surveyed square footage will vary from architect's square footage calculation.



[www.PoulsboPlace.com](http://www.PoulsboPlace.com)